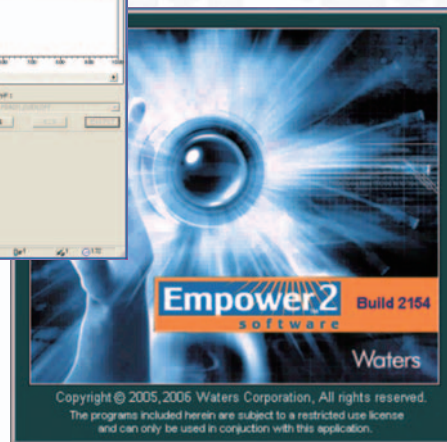
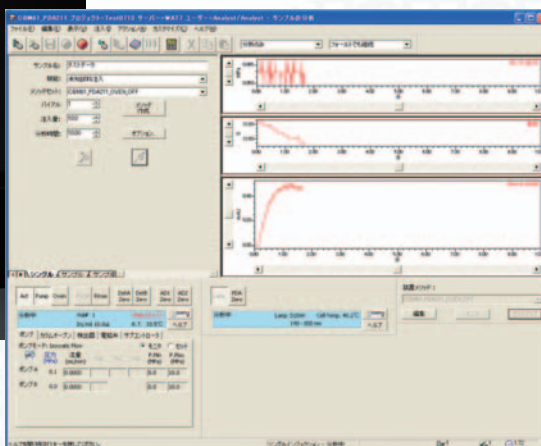


Shimadzu LC Driver Ver1.0 For Waters Empower™ Software

Control of Shimadzu's Prominence series high performance liquid chromatograph by Waters' Empower / Empower2 chromatography data system is now available through a collaboration between Waters and Shimadzu utilizing the "Open Interface Portal (OIP)" for multi-vendor hardware control. Shimadzu Prominence now seamlessly operates within the Empower software environment.



Seamless control of Prominence

Prominence control parameters are set through the Prominence method editor embedded in the Empower software. These parameters are stored and are handled as standard Empower method files. These parameters are also available for inclusion in the reports.

Now you can experience transparent control of Prominence HPLC through Empower.

Digital data acquisition for enhanced reliability.

Not only will you enjoy seamless system control, but in addition the detector signal is digitally transmitted to the data system.

This eliminates the necessity to add an A/D converter for analogue data acquisition, making system validation easier and more robust. Photodiode array detector 3D data analysis and spectral processing are also available through Empower. Furthermore, System status information such as pump pressures and column oven temperature may be monitored and recorded along with chromatograms making your analytical data even more reliable.

Regulatory Compliance support

Full system control including autosampler control uses Empower sample set methods and data processing is integrated with Empower software so that the audit trail functions of Empower software are fully utilized. This gives you full confidence in the compliance of the system to regulations such as GMP and 21 CFR Part 11.

Software Packages

	Product name	note
1	Shimadzu LC Driver Ver1.0 for Waters Empower Software (Single system license)	For Personal and Enterprise version
2	Shimadzu LC Driver Ver1.0 for Waters Empower Software (Four system license)	For Personal and Enterprise version

Empower System Control License is needed separately.

Contact Shimadzu local office for the version of Empower / Empower2 compatible with the option software.

Supported devices

Device type	Device name
System controller	CBM-20A / CBM-20A lite
Pump	LC-20AD / LC-20AT / LC-20AB
Auto Sampler	SIL-20A / SIL-20AC / Rack Changer / Rack Changer C
Column Oven	CTO-20A / CTO-20AC / CTO-10ASvp
Detector	SPD-20A / SPD-20AV / RF-10AXL / SPD-M20A / PC-55N (AD board)
Option box	Option Box vp / SubController vp
Solenoid valves	FCV-10AL / FCV-10ALvp / FCV-11AL / FCV-11ALS / FCV-15AL / Low Pressure 4 port valve built in to LC-20AD / LC-20AT
Rotary valves	FCV-12AH / FCV-13AL / FCV-14AH FCV-12AH / FCV-14H built in to CTO-20A / CTO-20AC

4 systems maximum with no PDA or 3 systems with single PDA or 2 systems with 2 PDA (per LAC/E).

CBM-20A lite will not support analogue data acquisition. Please use CBM-20A with a PC-55N AD board if analogue signal is acquired.

Founded in 1875, Shimadzu Corporation, a leader in the development of advanced technologies, has a distinguished history of innovation built on the foundation of contributing to society through science and technology. We maintain a global network of sales, service, technical support and applications centers on six continents, and have established long-term relationships with a host of highly trained distributors located in over 100 countries. For information about Shimadzu, and to contact your local office, please visit our Web site at www.shimadzu.com



JQA-0376



SHIMADZU CORPORATION. International Marketing Division

3. Kanda-Nishikicho 1-chome, Chiyoda-ku, Tokyo 101-8448, Japan

Phone: 81(3)3219-5641 Fax: 81(3)3219-5710

URL <http://www.shimadzu.com>

Empower and Empower2 are the Trade Mark of Waters corporation.
Contact a Shimadzu local office for sales of Empower software.