

LCMS-2020

Shimadzu

Liquid Chromatograph Mass Spectrometer



Seeing is Believing.

UFscanning

15,000 u/sec high-speed scanning

UFswitching

15 milliseconds high-speed polarity ionization switching time

UFsensitivity

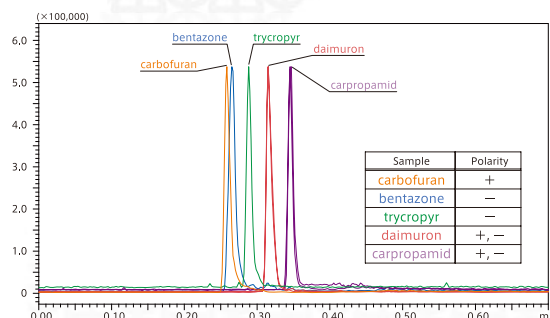
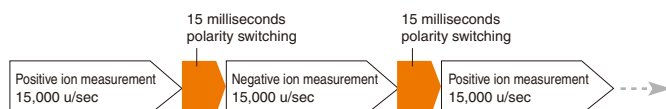
High-speed analysis with high sensitivity

UFscanning & UFswitching

UFLC/MS Measurement

UFscanning and UFswitching are critical for ultra-fast analysis.

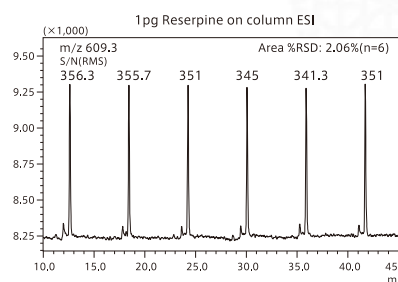
For example, in ultra-fast analysis where 6 compounds may elute within 1 minute, ultra-fast (MS measurement) detection is also required. The UFswitching and UFscanning functions are what make possible such ultra-fast MS measurement.



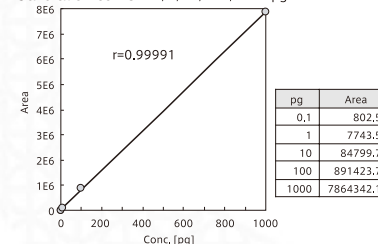
UFsensitivity

Ultra-fast analysis with excellent sensitivity

Newly developed ion optical system and new Qarray® provide excellent sensitivity, repeatability and linearity.



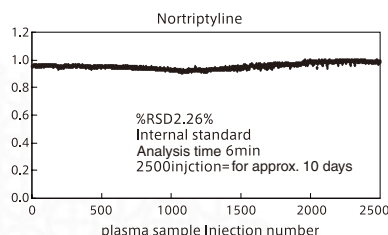
Calibration curve: 0.1, 1, 10, 100, 1000 pg



Hardware features that powerfully support 3 types of UF functionality

Toughness against dirty samples

In order to check toughness of LCMS-2020 against dirty samples, plasma samples simply precipitated with only acetonitrile were injected 2,500 times over 10 days (1 μL volume per injection). Excellence reproducibility of peak area was demonstrated and its c.v. was 2.26%.



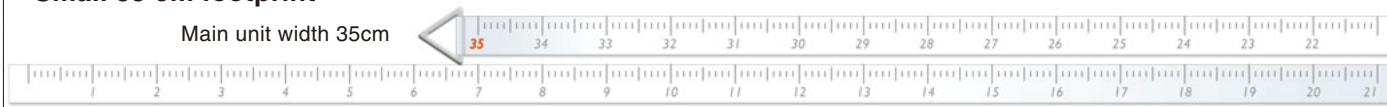
Easy Maintenance

The DL capillary (desolvation line), which transfers the sample into the vacuum chamber from the ion source, can be installed and removed without breaking the vacuum, greatly speeding maintenance operations.



Small 35 cm footprint

Main unit width 35cm



Founded in 1875, Shimadzu Corporation, a leader in the development of advanced technologies, has a distinguished history of innovation built on the foundation of contributing to society through science and technology. We maintain a global network of sales, service, technical support and applications centers on six continents, and have established long-term relationships with a host of highly trained distributors located in over 100 countries. For information about Shimadzu, and to contact your local office, please visit our Web site at www.shimadzu.com



SHIMADZU CORPORATION. International Marketing Division

3. Kanda-Nishikicho 1-chome, Chiyoda-ku, Tokyo 101-8448, Japan

Phone: 81(3)3219-5641 Fax: 81(3)3219-5710

URL <http://www.shimadzu.com>

Printed in Japan 3295-09801-10ANS



JQA-0376

The contents of this brochure are subject to change without notice.